



## What Emergency Management Needs to Know about Corrections

Correctional facilities face many unique challenges during an emergency or any incident, whether natural or human-caused, that require responsive action to protect life or property.\* Correctional facilities may have crowded dormitories, limited medical and isolation resources, restricted entrances, and a continual introduction of newly incarcerated or detained persons. Responding to a correctional facility or providing resources also requires advance planning and creative solutions because of the need to balance response actions with facility security. The following graphic provides emergency managers a glimpse into the unique considerations for collaborating with corrections.

- Learn about the existing health protocols and procedures within corrections systems.
- Understand how medical services are provided to people who are incarcerated and staff.
- Be aware that an outbreak of illness at a correctional facility can quickly overwhelm community resources if not given high priority.

### Health Protocols within Corrections Systems:



- Understand that corrections does not plan for extensive outside assistance because facilities must balance the needs of response with facility security.
- Solicit active participation from corrections in all hazards planning with local, state and federal organizations. Work together on emergency response plans that involve corrections facilities.
- Include corrections staff in tabletop exercises and drills to enhance coordination.

### Collaborative Planning:



- Be aware that corrections is a resource available to support emergency response but also may need resources during an event.
- Collaborate on resource-sharing strategies during crises.
- Be aware that corrections staff are difficult to replace without specialized training.

### Resource Requirements and Allocation:



- Understand legal and regulatory constraints affecting corrections systems.
- Ensure emergency management plans align with legal requirements for correctional facilities.
- Recognize that corrections has unique requirements and capabilities (e.g., facility security) that may influence the jurisdiction's response.

### Legal and Regulatory Frameworks:



- Be aware of the numbers, types, locations of correctional facilities in the state, county, local jurisdictions.
- Understand the physical layout, the limitations of the facilities, and the population density to assess potential risks during a pandemic.

### Facility Layout and Population Density:



- Establish clear communication channels with corrections leadership.
- Ensure that emergency information effectively reaches both staff and people who are incarcerated.

### Communication Channels:



- Identify vulnerable populations within corrections facilities (e.g., elderly, immunocompromised).
- Consider the needs of people who are incarcerated with preexisting health conditions.

### Vulnerabilities and Special Needs:

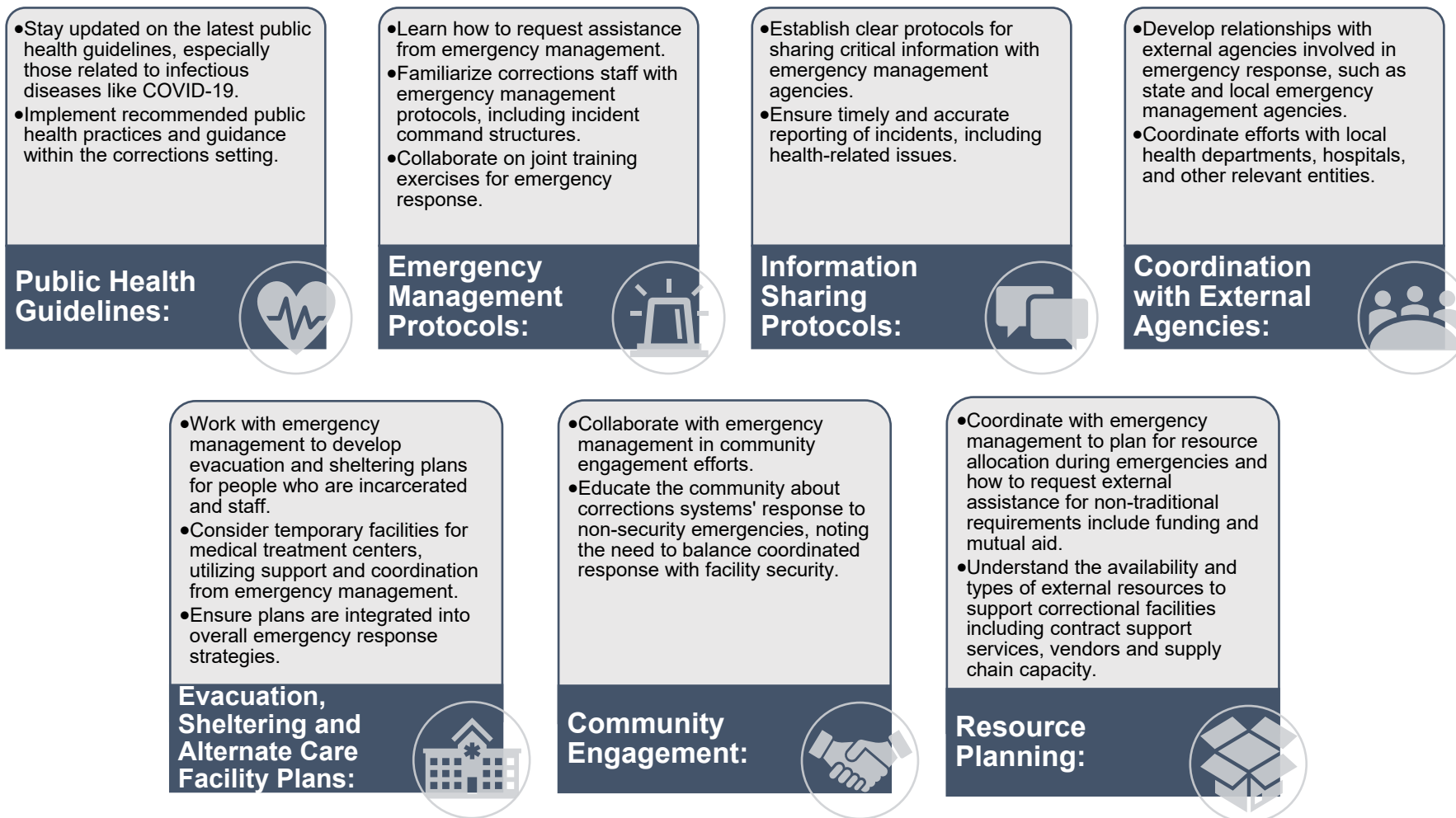


\* Definition of "emergency" by the Federal Emergency Management Agency, [Comprehensive Preparedness Guide 101 \(fema.gov\)](https://www.fema.gov/comprehensive-preparedness-guide-101).



## What Corrections Needs to Know about Emergency Management

Correctional facilities face many unique challenges during an emergency or any incident, whether natural or human-caused, that require responsive action to protect life or property.\* Correctional facilities may have crowded dormitories, limited medical and isolation resources, restricted entrances, and a continual introduction of newly incarcerated or detained persons. Responding to a correctional facility or providing resources also requires advance planning and creative solutions because of the need to balance response actions with facility security. The following graphic provides corrections guidance on why and how to collaborate with emergency management.



\* Definition of "emergency" by the Federal Emergency Management Agency, [Comprehensive Preparedness Guide 101 \(fema.gov\)](https://www.fema.gov/comprehensive-preparedness-guide-101).